

# Sculpture Composition

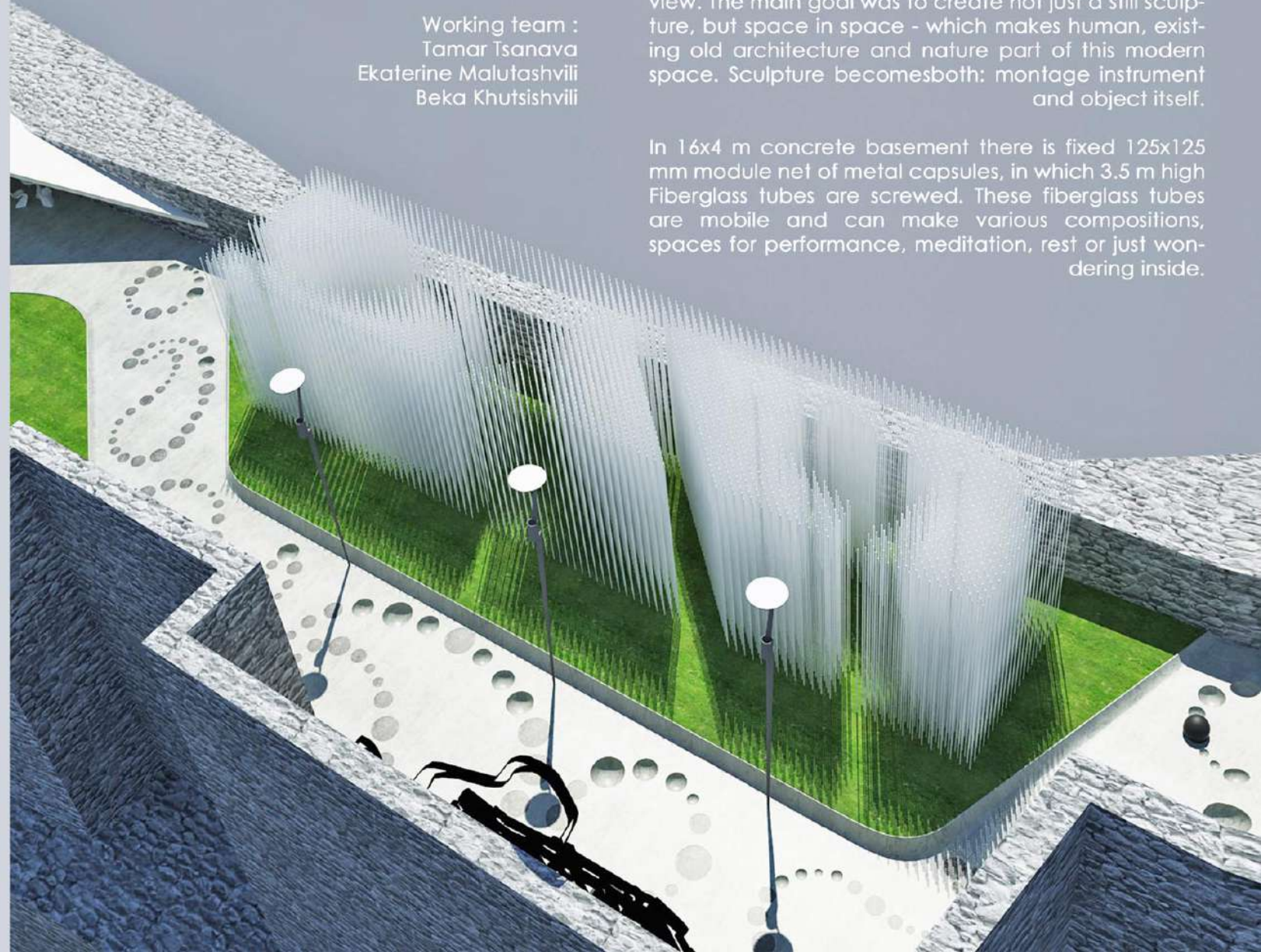
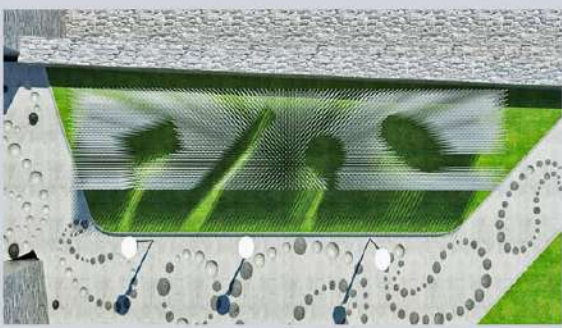
Akhaltzikhe, Georgia, 2012

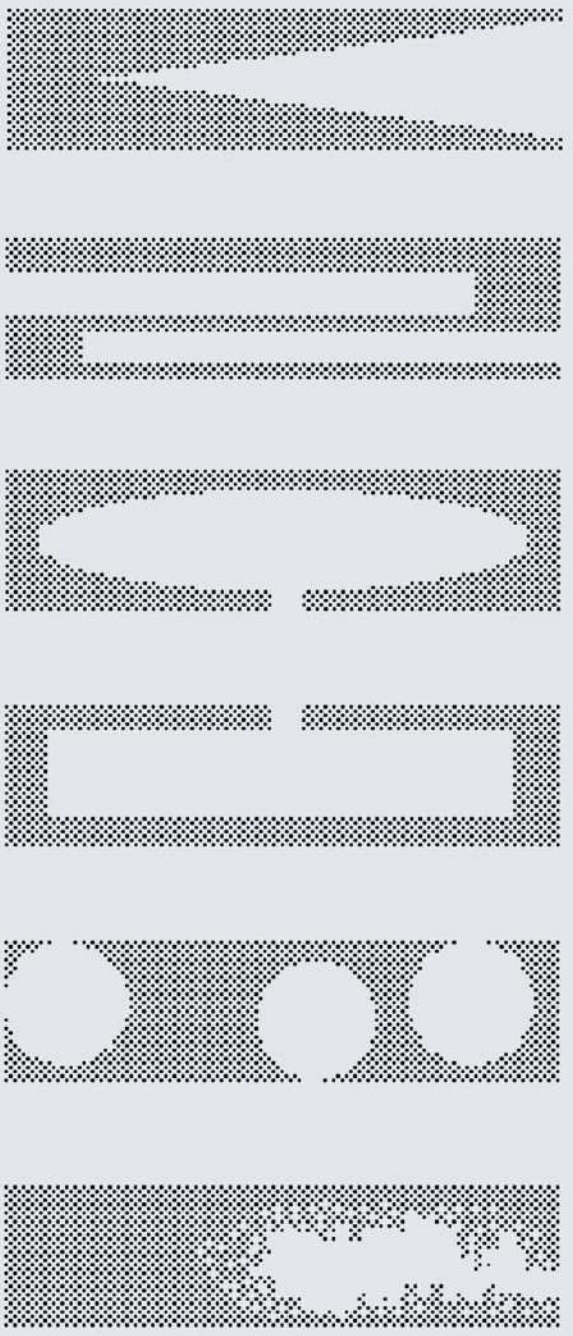
Competition > Winner  
Under Construction

Working team :  
Tamar Tsanava  
Ekaterine Malutashvili  
Beka Khutsishvili

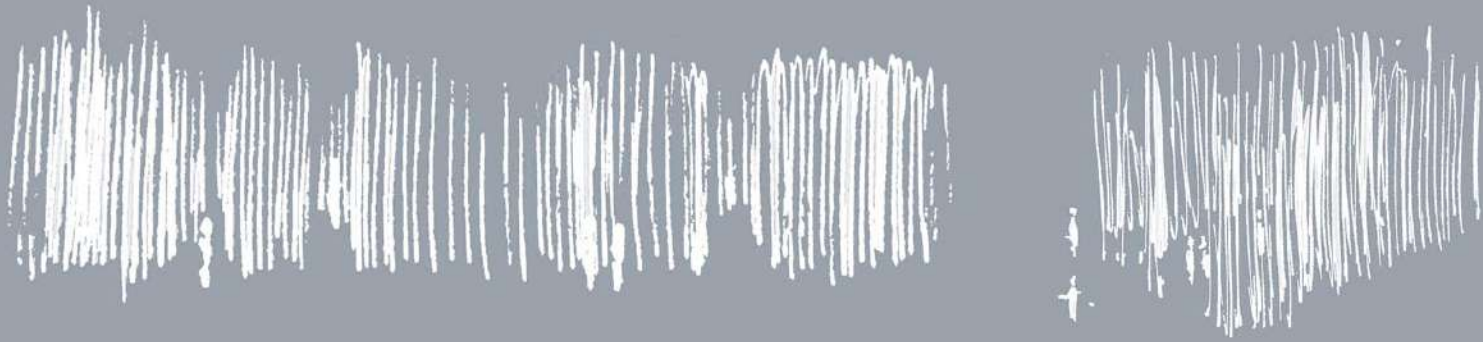
Sculpture composition, as a continuous shot, has a variety of interpretations with the alteration of angle of view. The main goal was to create not just a still sculpture, but space in space - which makes human, existing old architecture and nature part of this modern space. Sculpture becomes both: montage instrument and object itself

In 16x4 m concrete basement there is fixed 125x125 mm module net of metal capsules, in which 3.5 m high Fiberglass tubes are screwed. These fiberglass tubes are mobile and can make various compositions, spaces for performance, meditation, rest or just wondering inside.

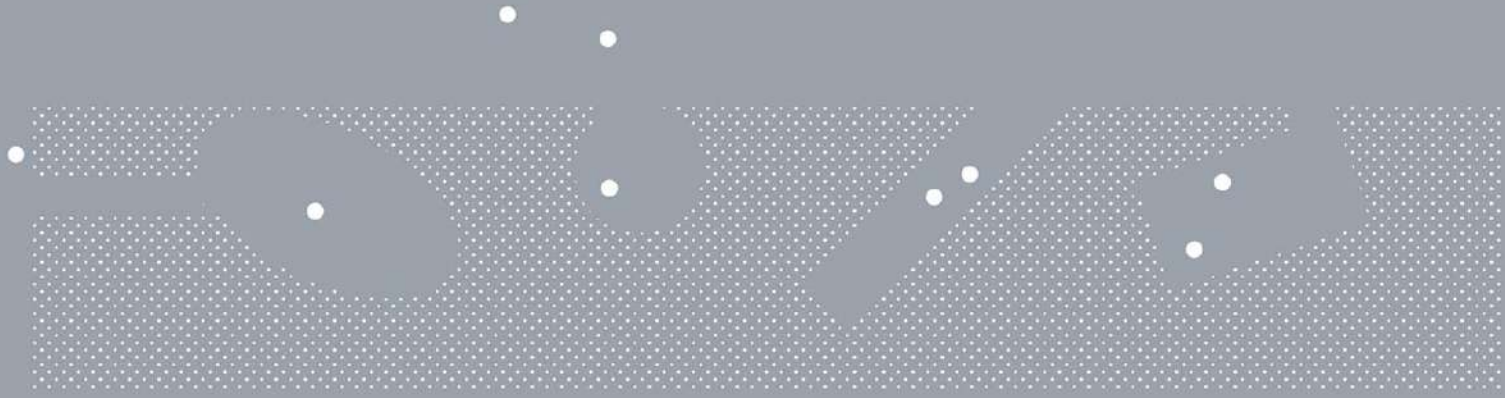




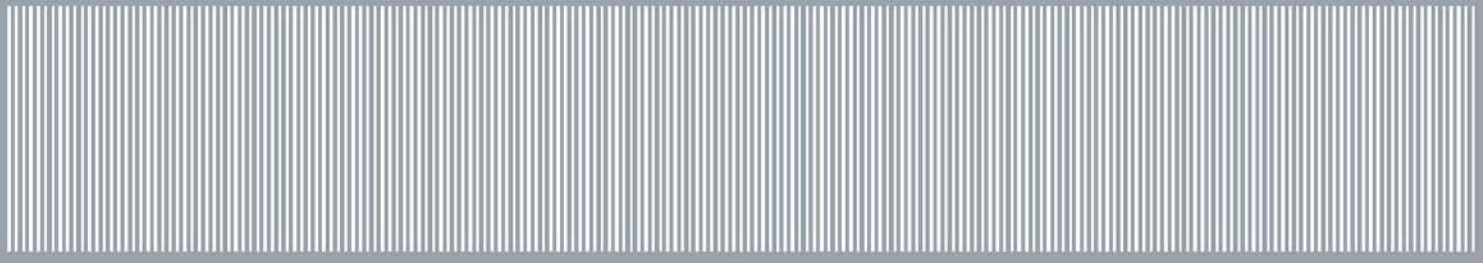
Project plan variations



Concept sketch



Project plan



Project Elevation

# Skyscraper

Tbilisi, Georgia, 2012

Academic Project. GTU.  
Master's degree, 2nd year  
Tutor: Shota Bostanashvili

Baku international  
festival 2012 > 1st prize

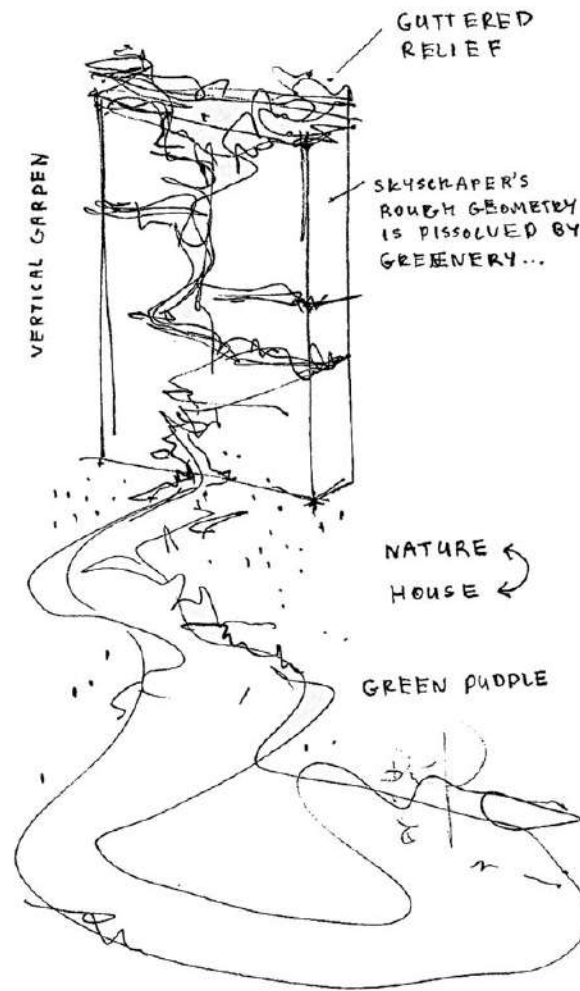
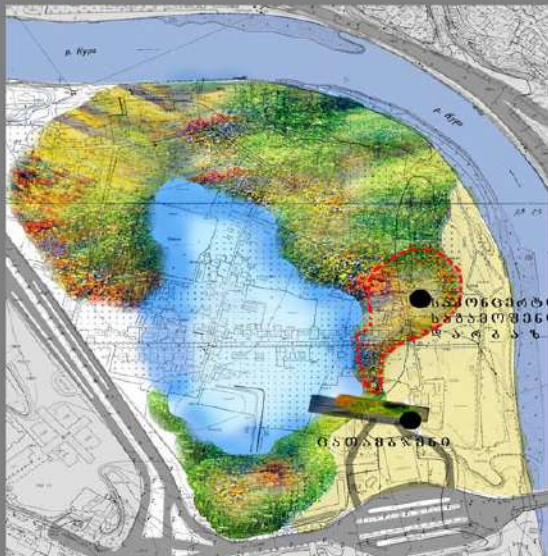
Nature was a host for architecture. Architecture as a guest was considering the place or conflicting with it. This dialog has changed its positions. Nature is seeking for a refuge itself, especially in megapolices, where artificial landscape became a major layer.

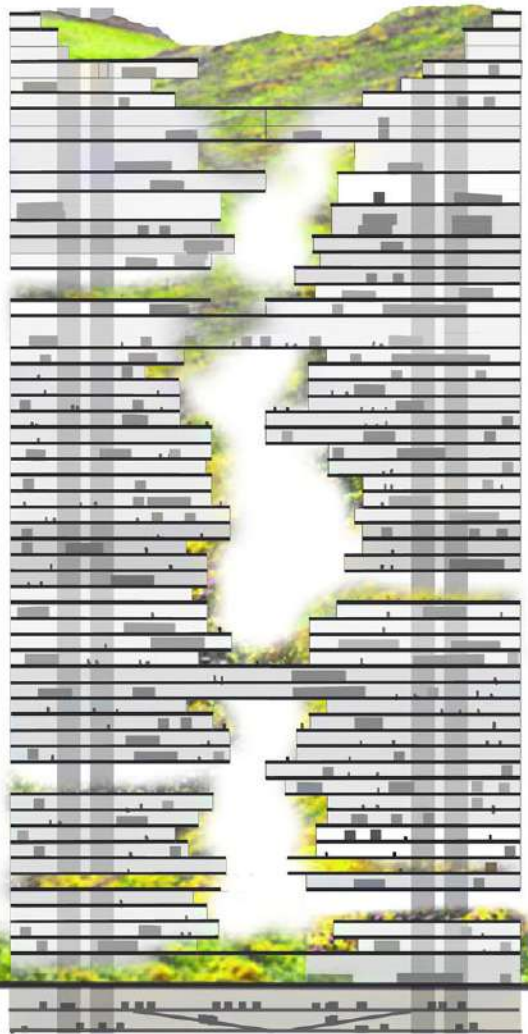
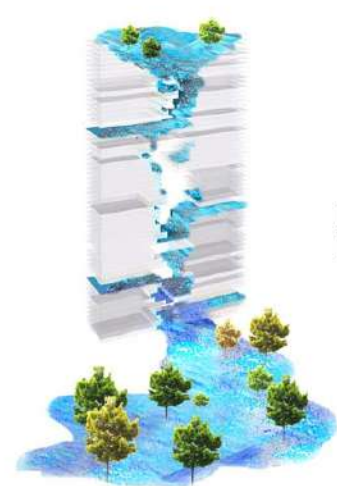
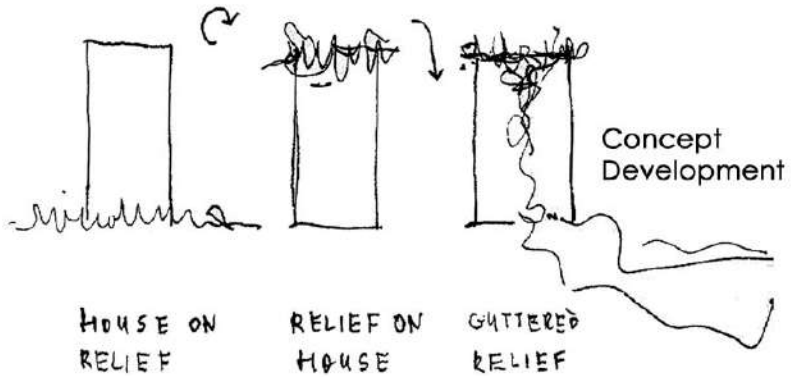
project concept:

Land on house > Nature took a shelter in house (skyscraper), took a place on the top of it, was guttered and gushed as a pool.

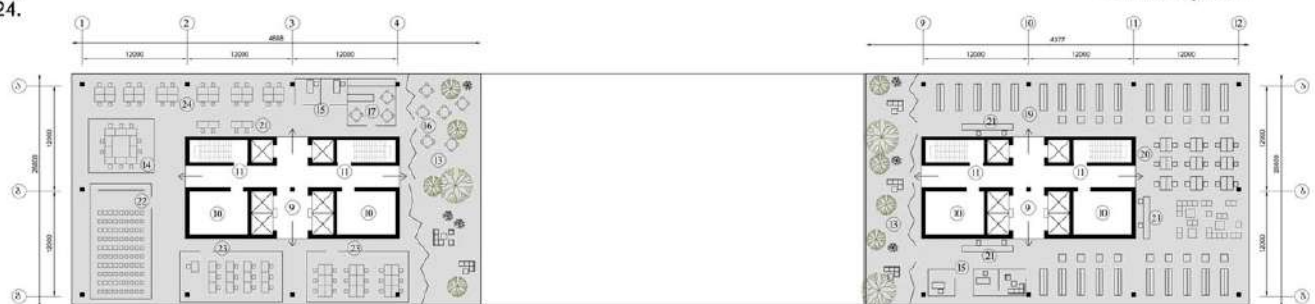
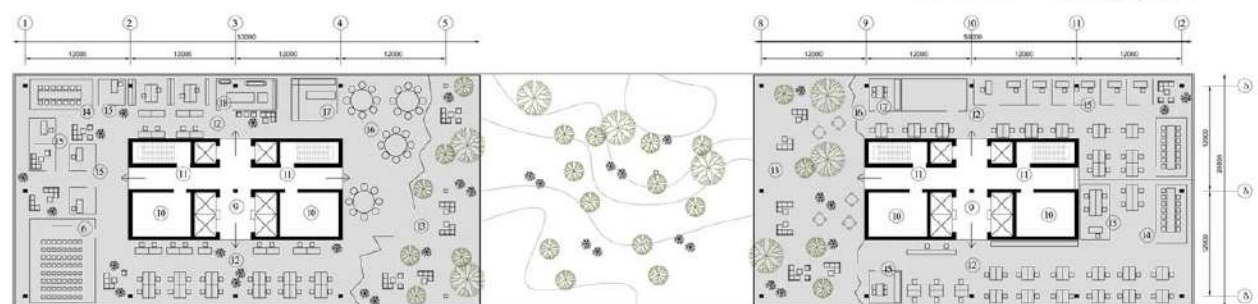
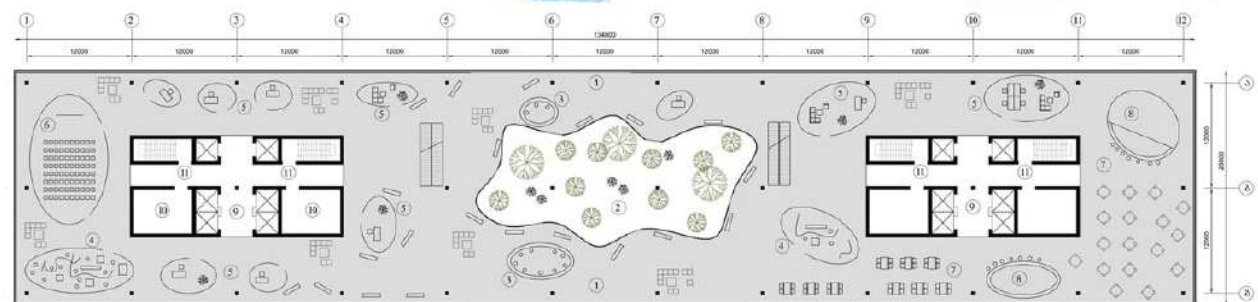
Project area: Tbilisi, between Mtkvari embankment and Gulia Street.

60-storied building's each floor comes out on green terraces. There are several public recreation areas on each 10 floors. floor planning is free and mobile.





- Legend:
- Lobby 1.
  - Inner yard 2.
  - Info 3.
  - Show-room 4.
  - Office 5.
  - Conference hall 6.
  - Cafe 7.
  - Bar 8.
  - Elevator 9.
  - WC 10.
  - Emergency exit 11.
  - Office area 12.
  - Terrace 13.
  - Meeting room 14.
  - Cabinet 15.
  - Dinning room 16.
  - Kitchen 17.
  - Technical room 18.
  - Bibliothek 19.
  - Reading hall 20.
  - Info 21.
  - Auditorium 22.
  - Workshop 23.
  - Working area 24.



Educaitional

Bibliothek Plan



In modern epoch, when art, as well as architecture with a cosmic speed is striving for Mass culture, it's difficult to search for a new theme. Searching for Donor has become necessary. For an response of this problem, in the studio of Poetics of Architecture, a new paradigm was born – **Naïve Art**.

It's a game - "what you see, see the first time, as if it hasn't been before" (**Otar Chiladze**) and it is a continuation of that games, I used to work on beginning from baccalaureate as conference themes or academic works.

The cultural topos of my diploma work (Resort complex) on the one hand, is Naïve art, as **Cesare Novi's** painting "Mystery by the Riverbank" (1992); and on the other hand, verse of **Galaktioni** – "...to blue mountains, to white sanatoria.."

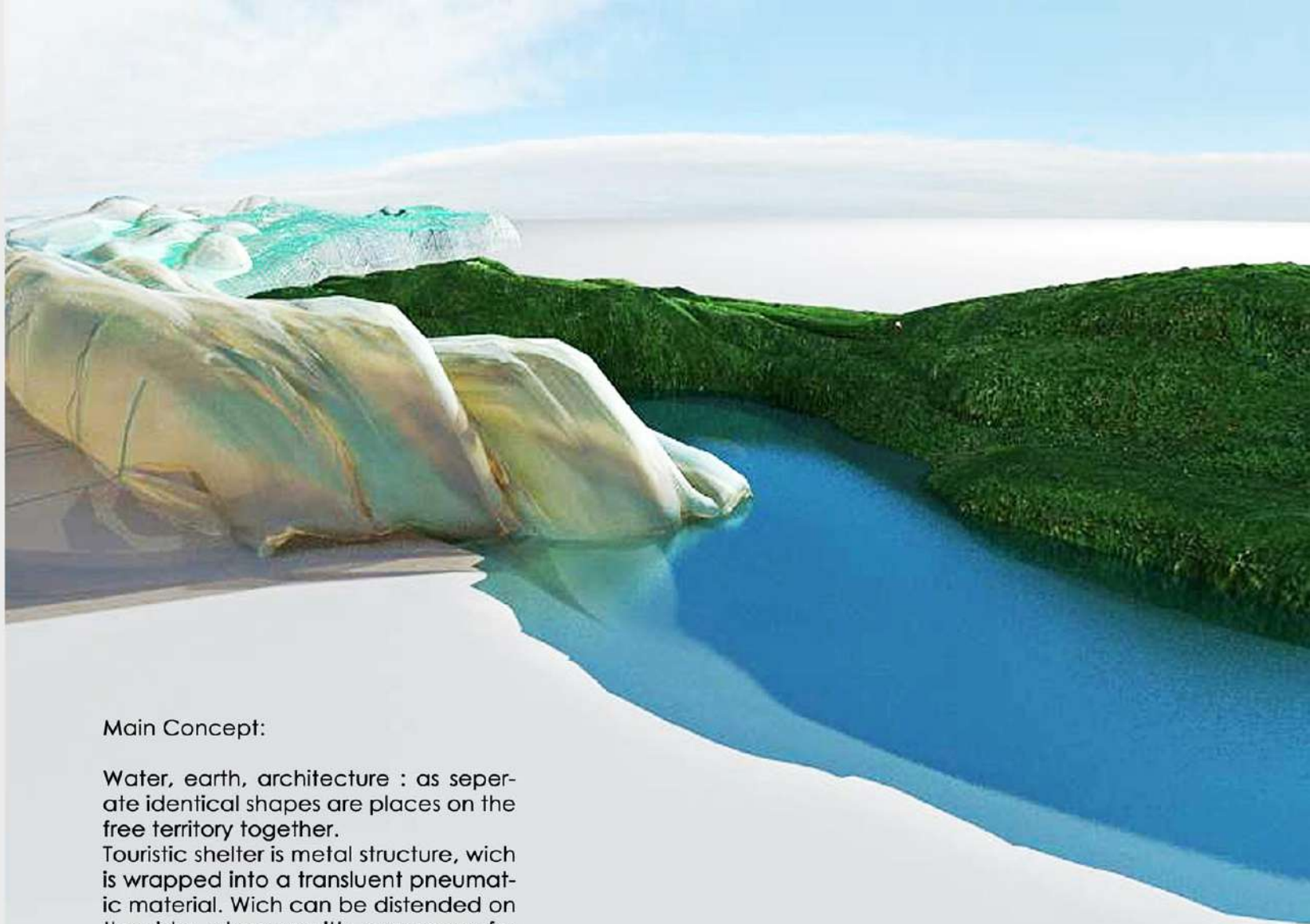
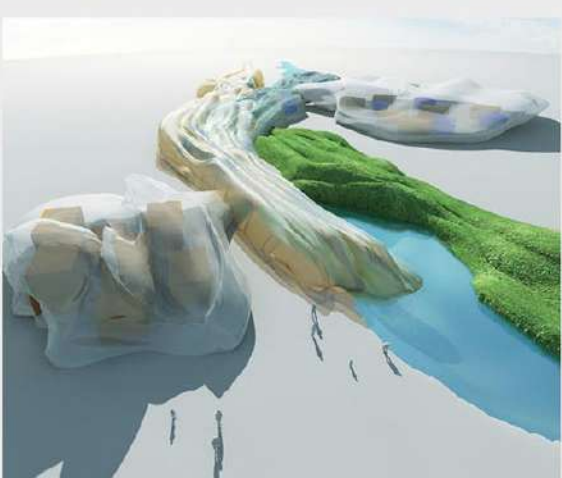
# Resort Complex

## Naïve art - New Paradigm of Architecture

Tbilisi, Georgia. 2012

Diploma Project. GTU  
Master's degree





### Main Concept:

Water, earth, architecture : as separate identical shapes are placed on the free territory together.

Touristic shelter is metal structure, which is wrapped into a translucent pneumatic material. Which can be distended on the sides whenever it's necessary: for placing more touristic rooms, concerts, theatre, shows...

Planning is flexible, free for movement and wondering inside. trees and water penetrate through the structure and creates private nature for inhabitants.

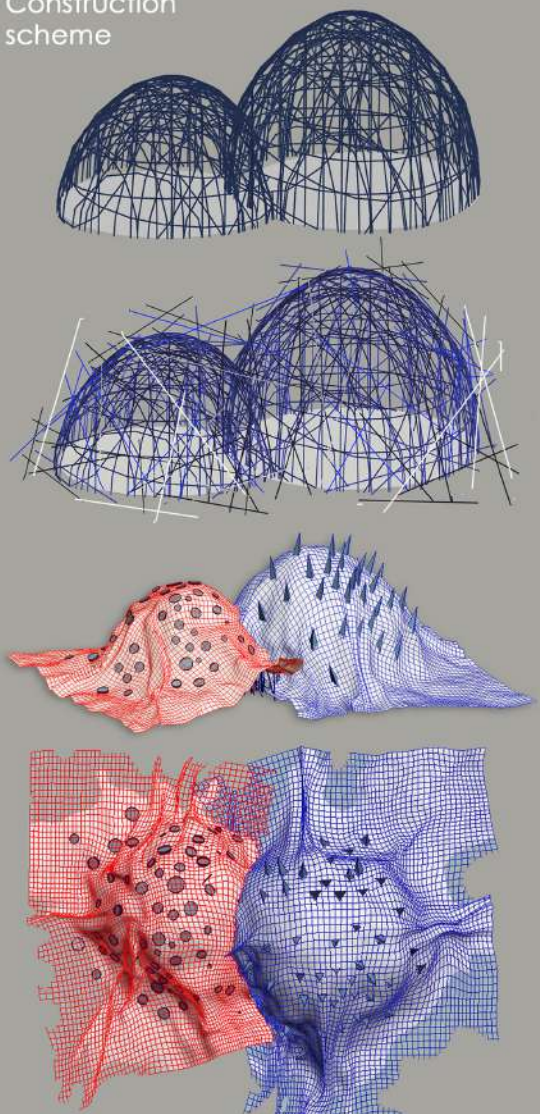
Rooms for tourists are individual shapes, sketched around the touristic base. They can be moved anywhere a person wishes.

## Touristic Base ■

Georgia. 2012

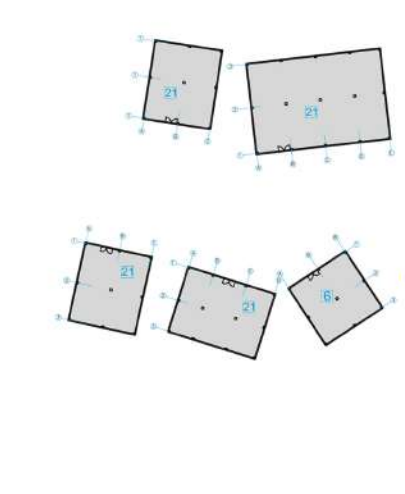
Academic work. GTU  
Master's degree. 1st year.  
Tutor: Shota Bostanashvili

# Construction scheme



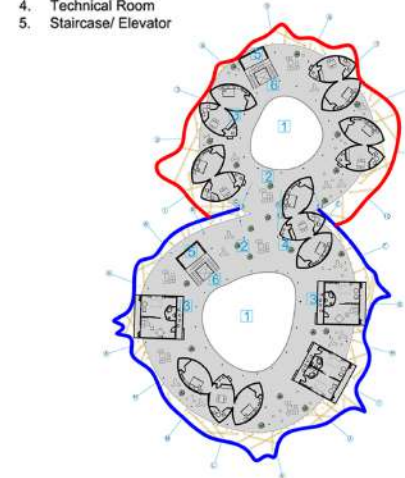
The construction of the mountains is composed with independent 5-7 floor construction and complicated metal construction (as a bird nest), which is covered with ultramarine and sharp red materials (cover could be changed with different variations). Geometric forms for illumination are cut through the mountains as trees. Floors like shelves are placed around the big atrium, which is in the center of the mountain. Each function is a different shape and placed in one general space. Resort complex offers guests distinct ways of living : living with sleeping bags (hippy life); one-room spaces (capsules of Kisho Kurokawa) or double-triple-room apartments; or naive houses, which could be richly furnished.

- Legend:
- 1. Main Entrance
  - 2. General Space
  - 3. Info
  - 4. Service Burro
  - 5. Registration
  - 6. Administration
  - 7. Wardrobe
  - 8. Luggage storage
  - 9. Technical Room
  - 10. Restaurant
  - 11. Kitchen
  - 12. Storage
  - 13. Staff
  - 14. Elevator/Staircase
  - 15. wc
  - 16. Cafe-Bar
  - 17. Parking
  - 18. Entrance from Parking area
  - 19. Entrance for Staff
  - 21. House-hotel

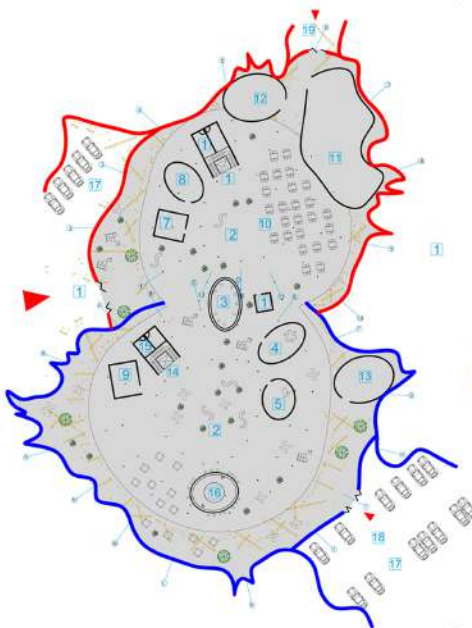


1st Floor Plan Scale: 1:200

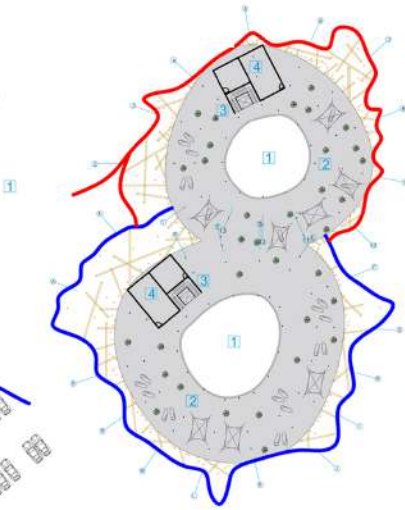
- Legend:
- 1. Atrium
  - 2. General Space
  - 3. 2-room Apartment
  - 4. 3-room Apartment
  - 5. Technical Room
  - 6. Staircase/ Elevator



4th Floor Plan Scale: 1:200

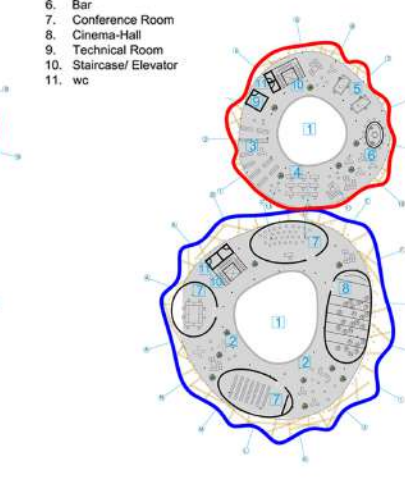


- Legend:
- 1. Atrium
  - 2. Space for tents and sleeping bags
  - 3. Staircase/ Elevator
  - 4. Shower / wc



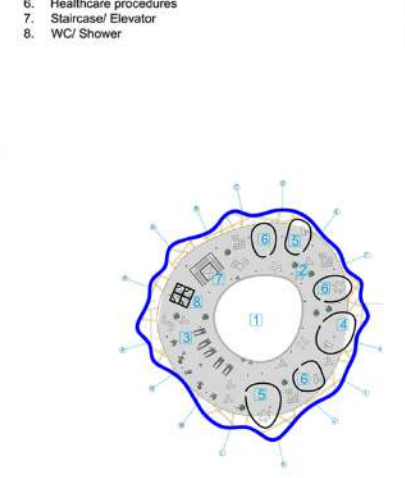
2nd Floor Plan Scale: 1:200

- Legend:
- 1. Atrium
  - 2. General Space
  - 3. Bibliotheca
  - 4. Reading space
  - 5. Billiard
  - 6. Bar
  - 7. Conference Room
  - 8. Cinema-Hall
  - 9. Technical Room
  - 10. Staircase/ Elevator
  - 11. wc



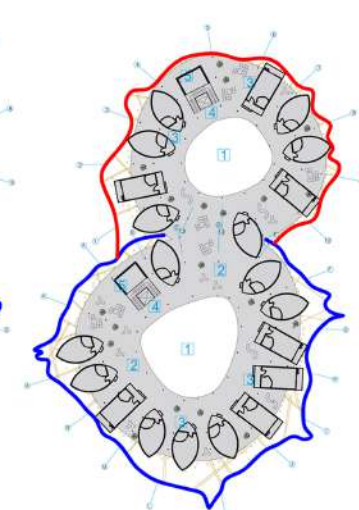
5th Floor Plan Scale: 1:200

- Legend:
- 1. Atrium
  - 2. General Space
  - 3. Gym
  - 4. Doctor
  - 5. Spa
  - 6. Healthcare procedures
  - 7. Staircase/ Elevator
  - 8. WC/ Shower



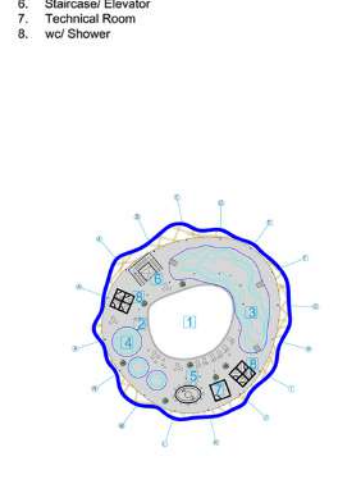
6th Floor Plan Scale: 1:200

- Legend:
- 1. Atrium
  - 2. General Space
  - 3. 1-room Apartment
  - 4. Technical Room
  - 5. Staircase/ Elevator

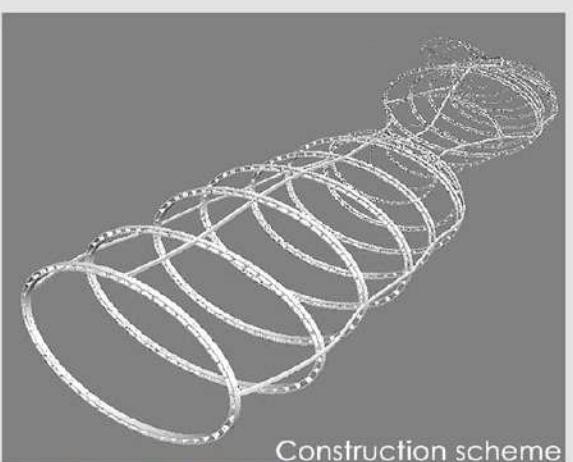


3rd Floor Plan Scale: 1:200

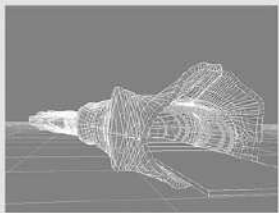
- Legend:
- 1. Atrium
  - 2. General Space
  - 3. Swimming Pool
  - 4. Jacuzzi
  - 5. Bar
  - 6. Staircase/ Elevator
  - 7. Technical Room
  - 8. wc/ Shower



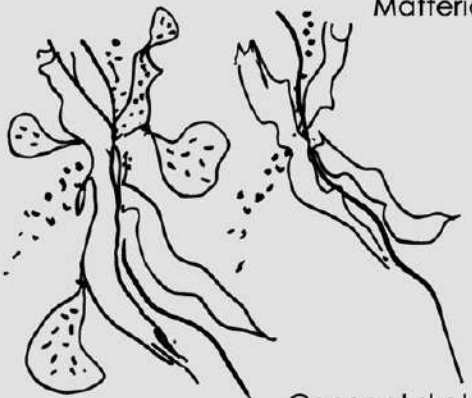
7th Floor Plan Scale: 1:200



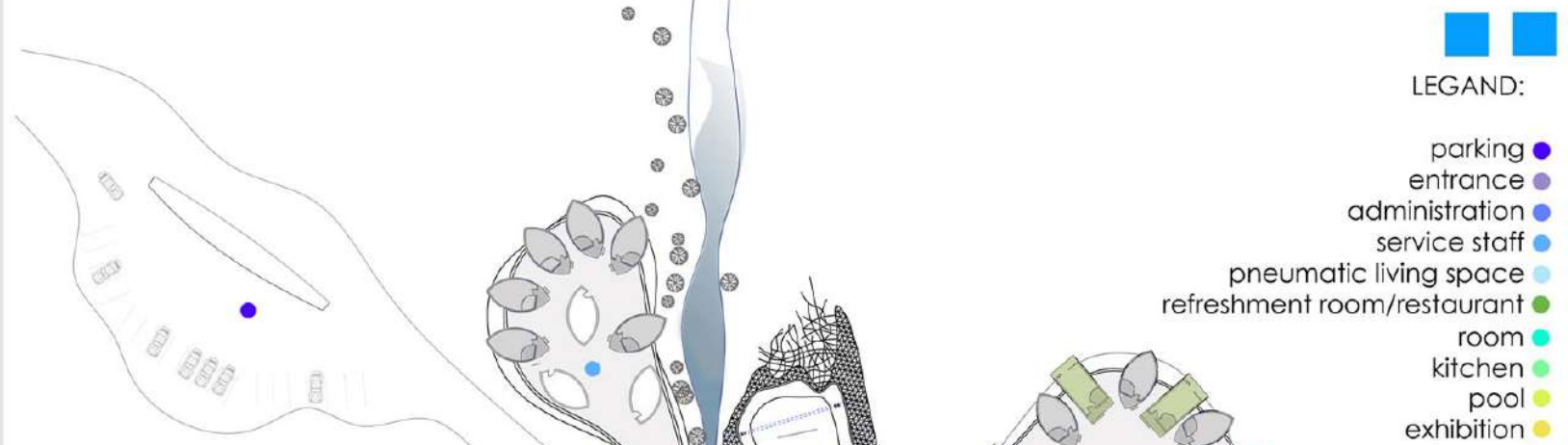
Construction scheme



Materials



Concept sketch



Touristic base - Plan



Pneumatic Living Space



LEGEND:

- parking ●
- entrance ●
- administration ●
- service staff ●
- pneumatic living space ●
- refreshment room/restaurant ●
- room ●
- kitchen ●
- pool ●
- exhibition ●
- conference ●



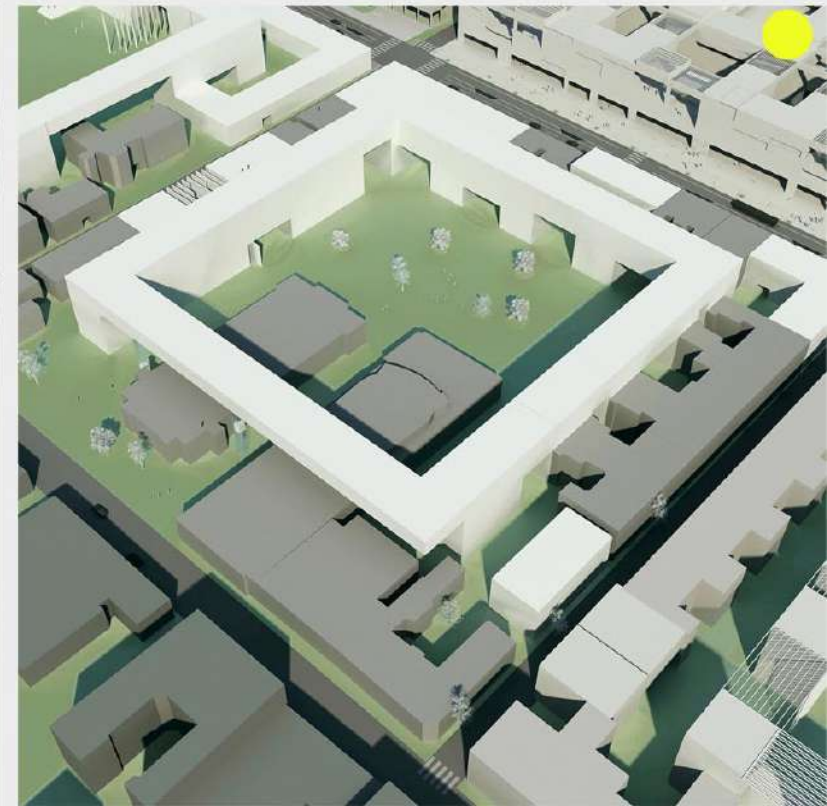
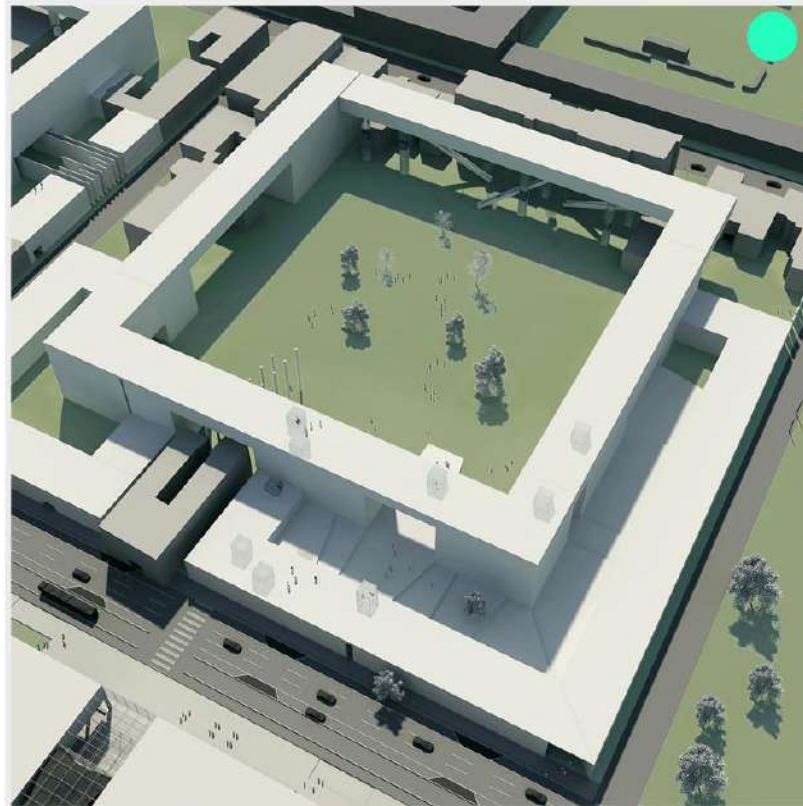
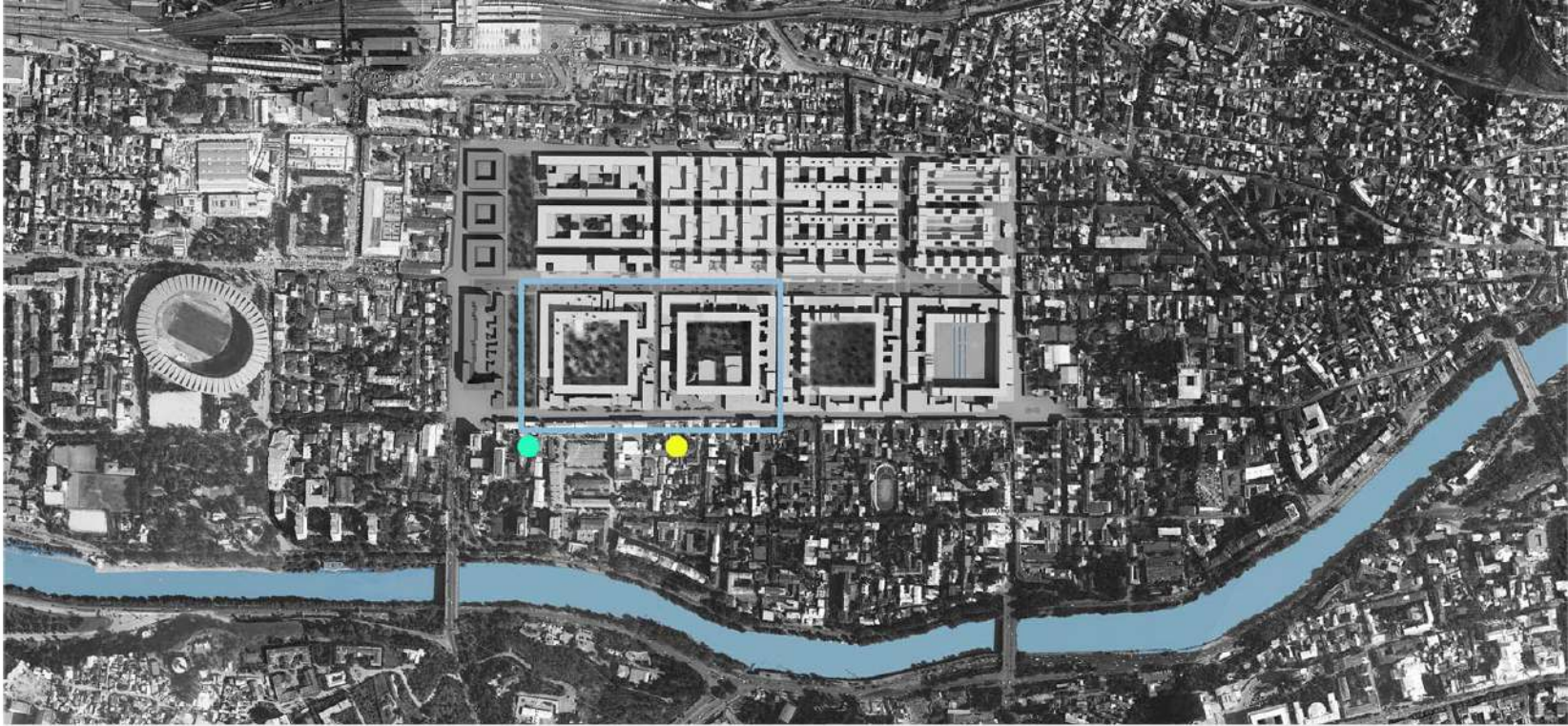
# New Centre of Tbilisi

Tbilisi . Georgia. 2010  
Studio prof. Jan Bocan  
Workshop winner project

The masterplan concept was developed by the whole working team of Georgian architects under the guidance of Studio prof. Jan Bocan.

Separate projects were developed individually.  
One of them is presented here.

Main concept

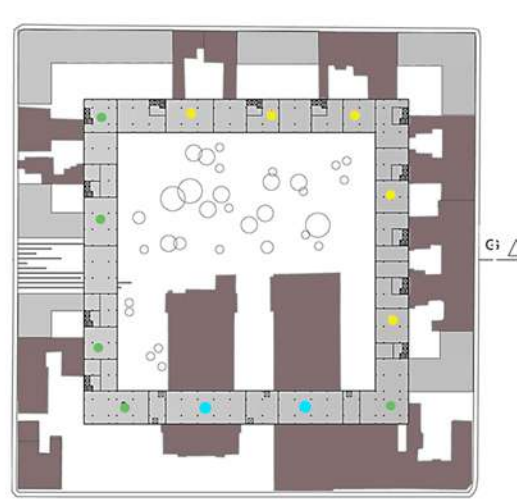
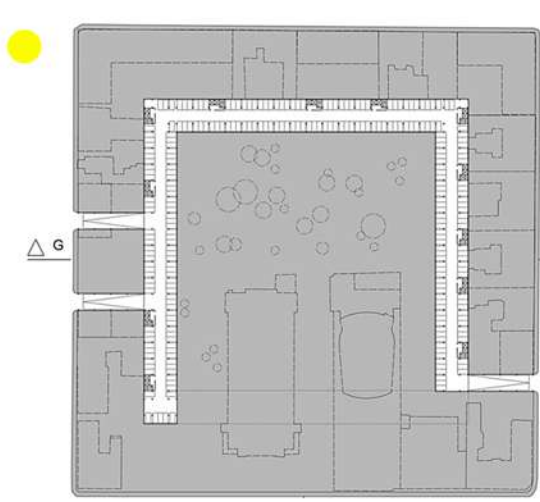
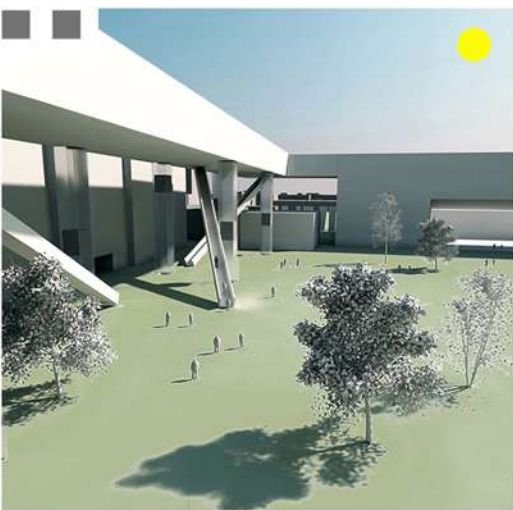


The aim of the project was to create new block in Old Tbilisi heritage preservation zone, in urban context of the area. The design concept is space within space, new block in old one.

The project is located between Ag-mashenebeli ave. and Winamdzgrishvili Street, from Queen Tamar's avenue to Marjanishvili Street. It is transitional space between old and new districts.

Parametrical structure of resisting monuments and renovated garden system, which is one of main characteristics of the German quarters are kept. Inner yards, which are so typical for Old Tbilisi are important as a concept to keep private spaces, yards. There are connections at all levels to organize peoples flow. The roofs are used as a public space.

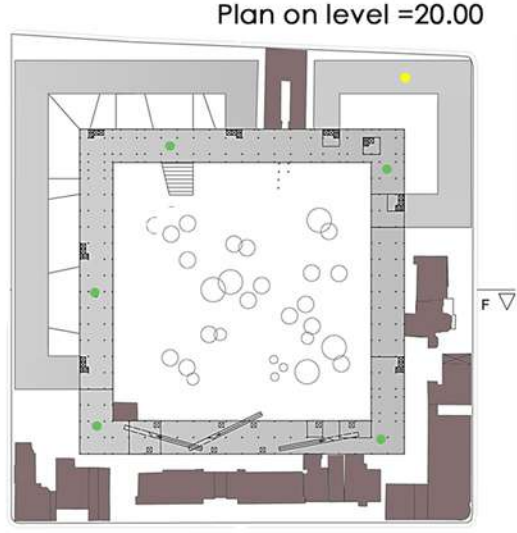
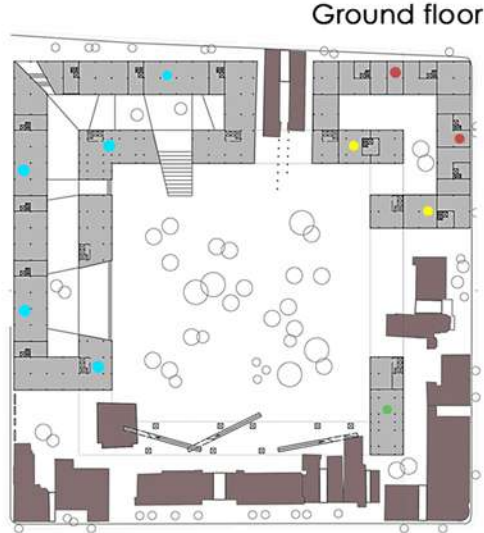
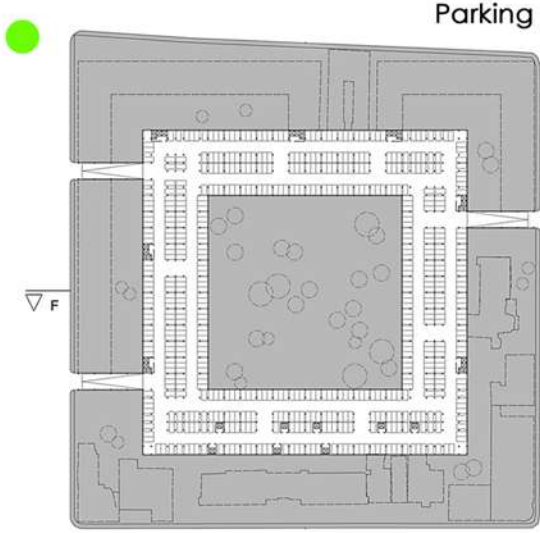
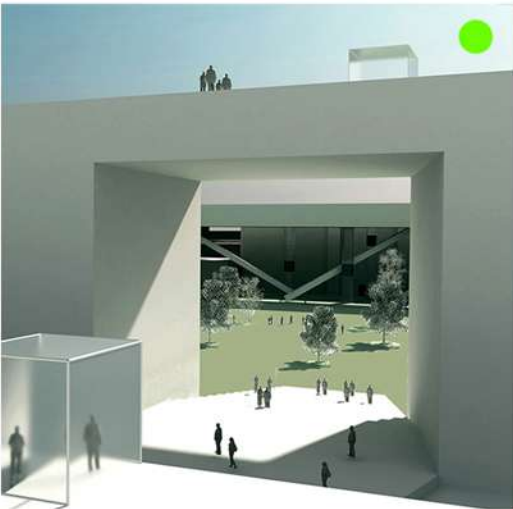
New block is based on 8x8 column systems on parking level and 4x4 column systems on upper levels.



Parking

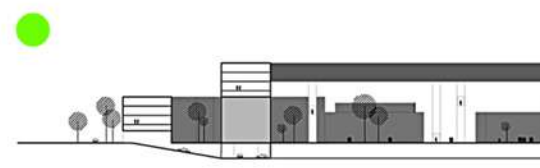
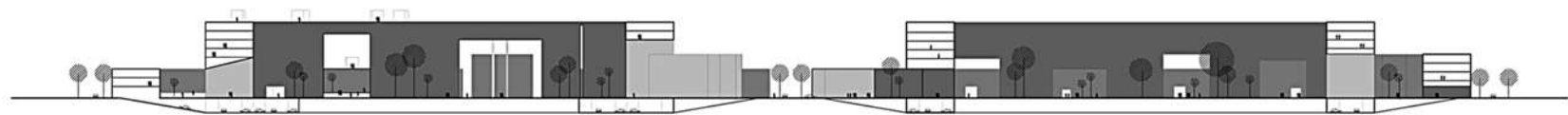
Ground floor

Plan on level =20.00



- LEGAND:
- apartment
  - office
  - monuments
  - retail
  - public terrace
  - new buildings

Section F-F



Section G-G



# Reconstruction-revitalization of historic districts subject to touristic routes

International architectural workshop. Tbilisi. Georgia. 2010

Working team:  
 (team leader) Tamar Tsanova  
 Levan Matiashvili  
 Ege Usal  
 Kubra Aivcilar  
 Gunes Yegen

On a base of learning the project area, we removed all parasite constructions from the territory and opened inner yards due to historical concept of old district development. Released territories we kept for recreation and additional functions moved under-ground.

Trying not to destroy multilayer principle and scale of Old Tbilisi, we created new mobile and light layer.

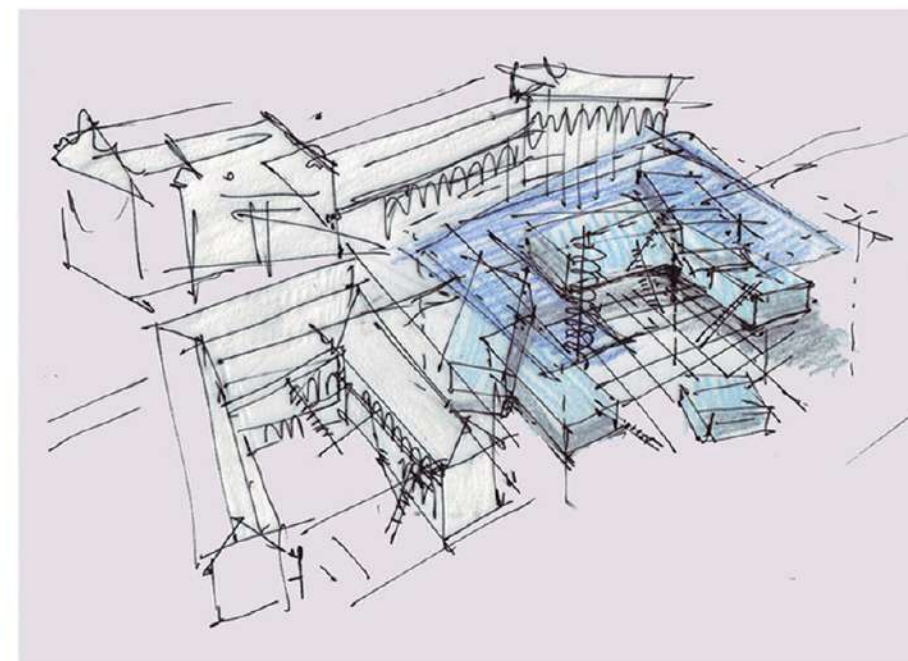
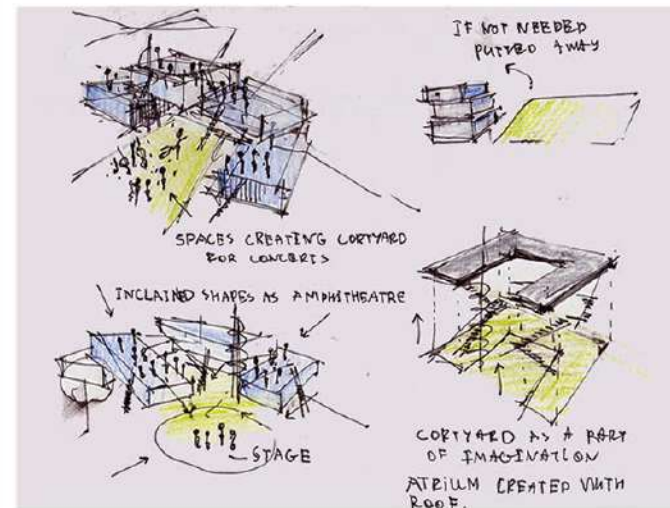
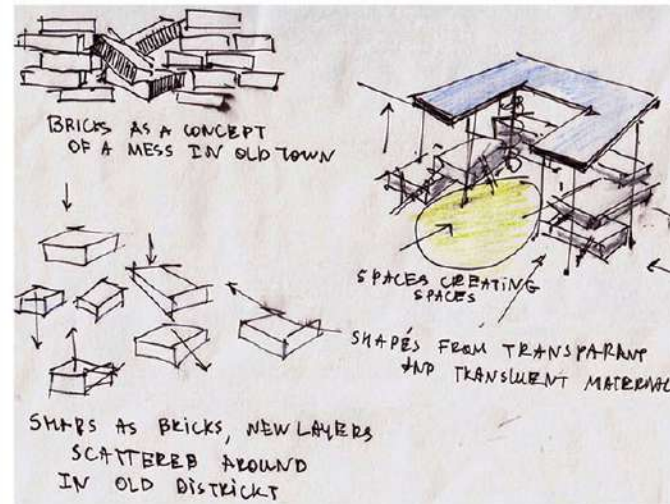
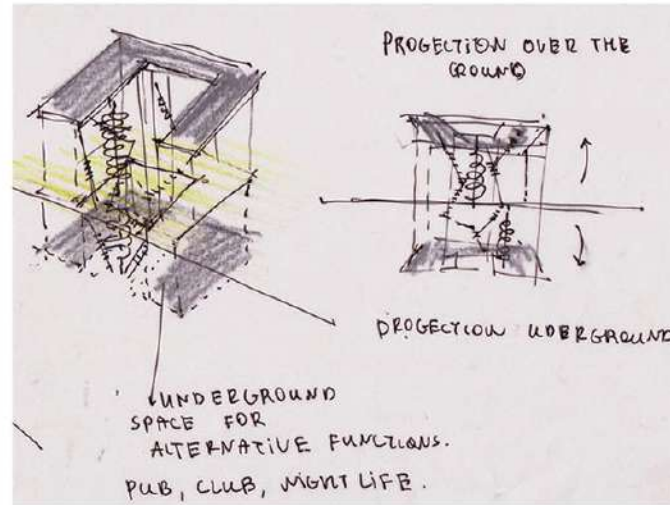
Main concepts:

## Atrium house of Old Tbilisi

we flipped vertical and moved underground, where alternative town was located, with night life, pubs, restaurants and clubs. Over ground we made a projection of that atrium house and left only roof and staircase system.

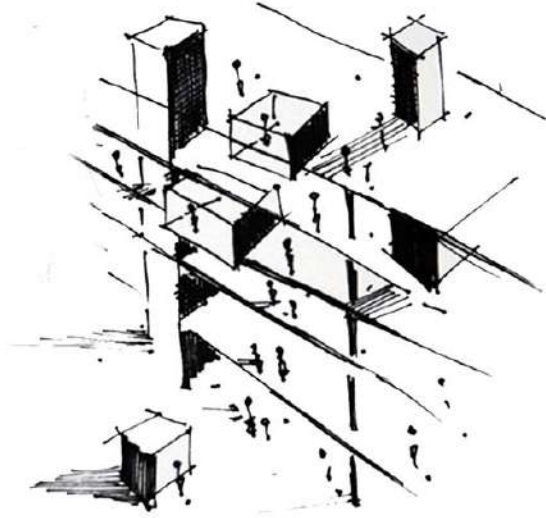
**Bricks destroyed** – as a paradigm of old district's chaotic character.

Light, transparent boxes are scattered around the territory as street furniture. In case of need they can be put to create inner yards or amphitheater under the projection of atrium house. If necessary they could be removed and put away.

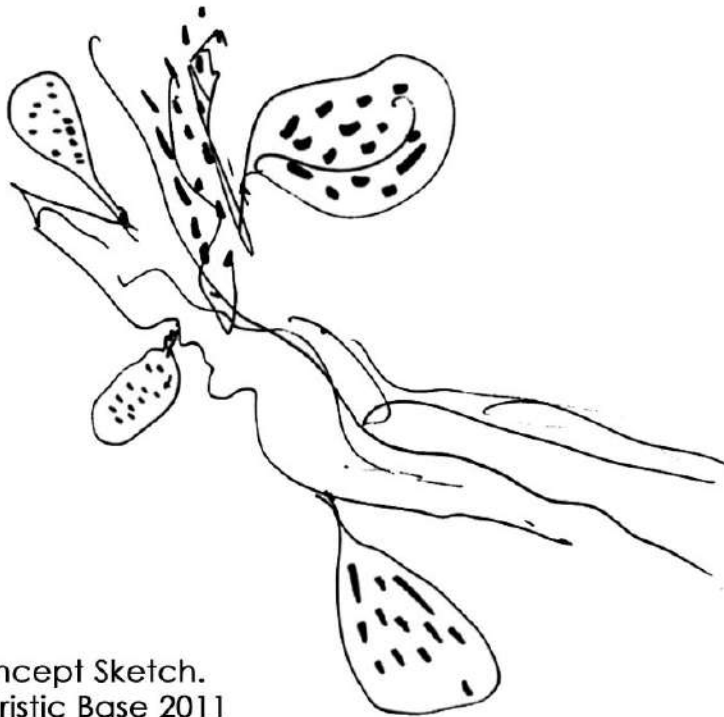


Concept sketches

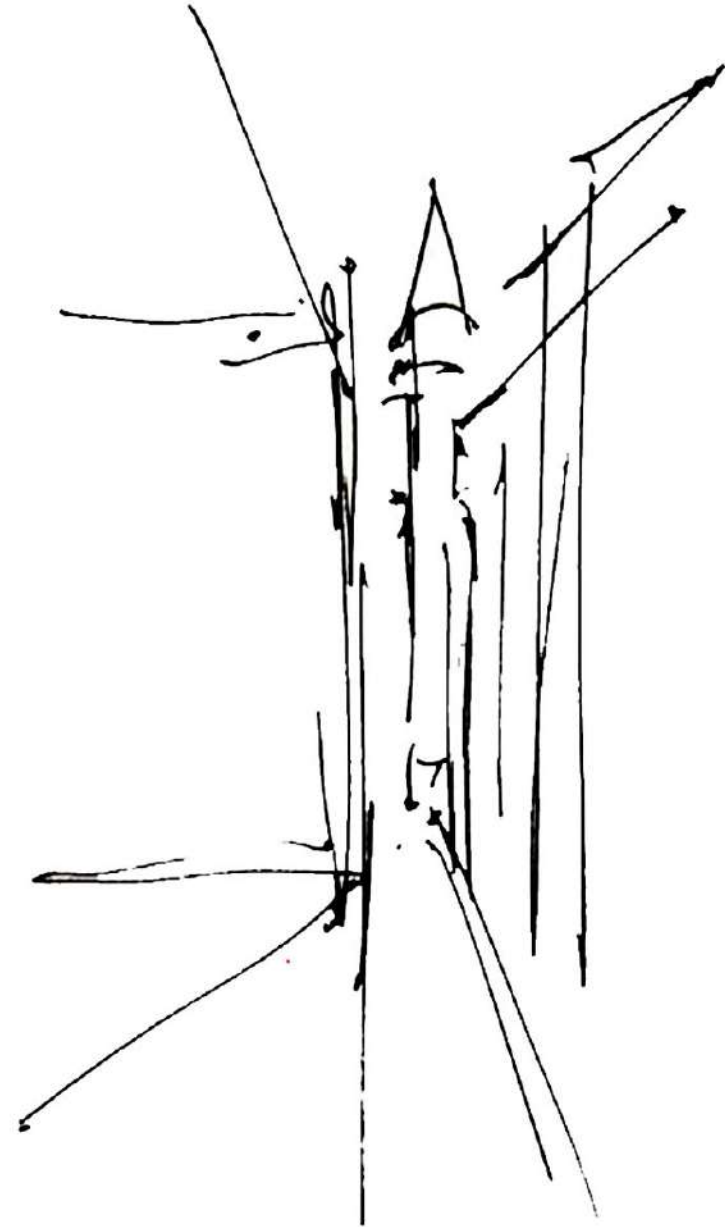




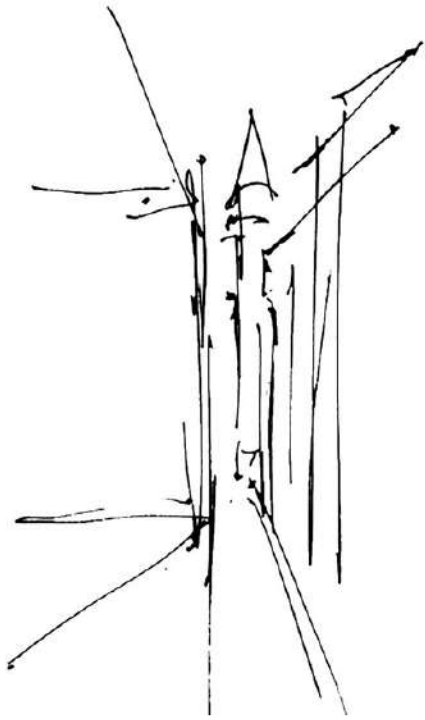
■ Concept Sketch. University. 2010



■ Concept Sketch.  
Touristic Base 2011



■ Galata Tower. Istanbul. Turkey. 2010



■ Galata Tower. Istanbul. Turkey. 2010



■ View from Office 2012



■ Wondering in the city. Georgia 2012



Old Tbilisi street . Georgia 2012



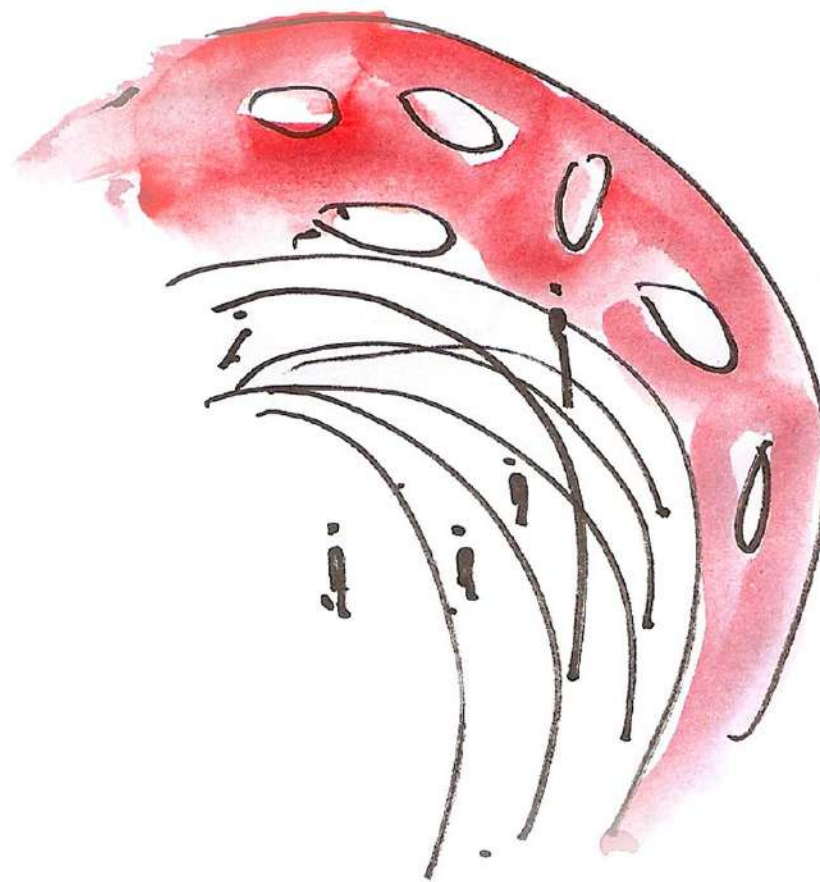
View from Office 2012



Wondering in the city. Georgia 2012

■ **PORTFOLIO**  
Tamar Tsanova

Tbilisi. Georgia. 2012





# Tamar Tsanava

Education: Georgian Technical University  
Faculty of Architecture, Urban  
planning and Design  
Bachelor's degree 2006-2010  
Master's degree 2010-2012



Date of Birth: 26 Apr 1989. Tbilisi  
Address: Dighomi Massive V-X-13.  
Tbilisi. Georgia0159  
Telephone: +995 599 323264  
E-mail : art\_tamuna@yahoo.com

## Resume

### Professional Work:

-  Sculpture composition in Akhaltsikhe, Georgia. 2012  
/Competition winner/ Under construction/

### Academic Works:

-  Skyscraper / Tbilisi. Georgia/ 2012  
/Master's degree. 3rd semester. GTU/ Baku international festival winner/
-  Resort Complex /2012  
/Master's degree. Diploma project. GTU/

### Workshops:

-  Reconstruction-revitalization of historic districts subject to tour-  
istic routs/ International architectural Workshop/ Tbilisi.Georgia /2010

### Additional works:

-  Sketches





# Tamar Tsanava

Education: Georgian Technical University  
Faculty of Architecture, Urban  
planning and Design  
Bachelor's degree 2006-2010  
Master's degree 2010-2012


Date of Birth: 26 Apr 1989. Tbilisi  
Address: Dighomi Massive V-X-13.  
Tbilisi. Georgia0159  
Telephone: +995 599 323264  
E-mail : art\_tamuna@yahoo.com


## Resume

### Professional Work:

 Sculpture composition in Akhaltsikhe, Georgia. 2012  
/Competition winner/ Under construction/

### Academic Works:

 Skyscraper / Tbilisi. Georgia/ 2012  
/Master's degree. 3rd semester. GTU/ Baku international festival winner/

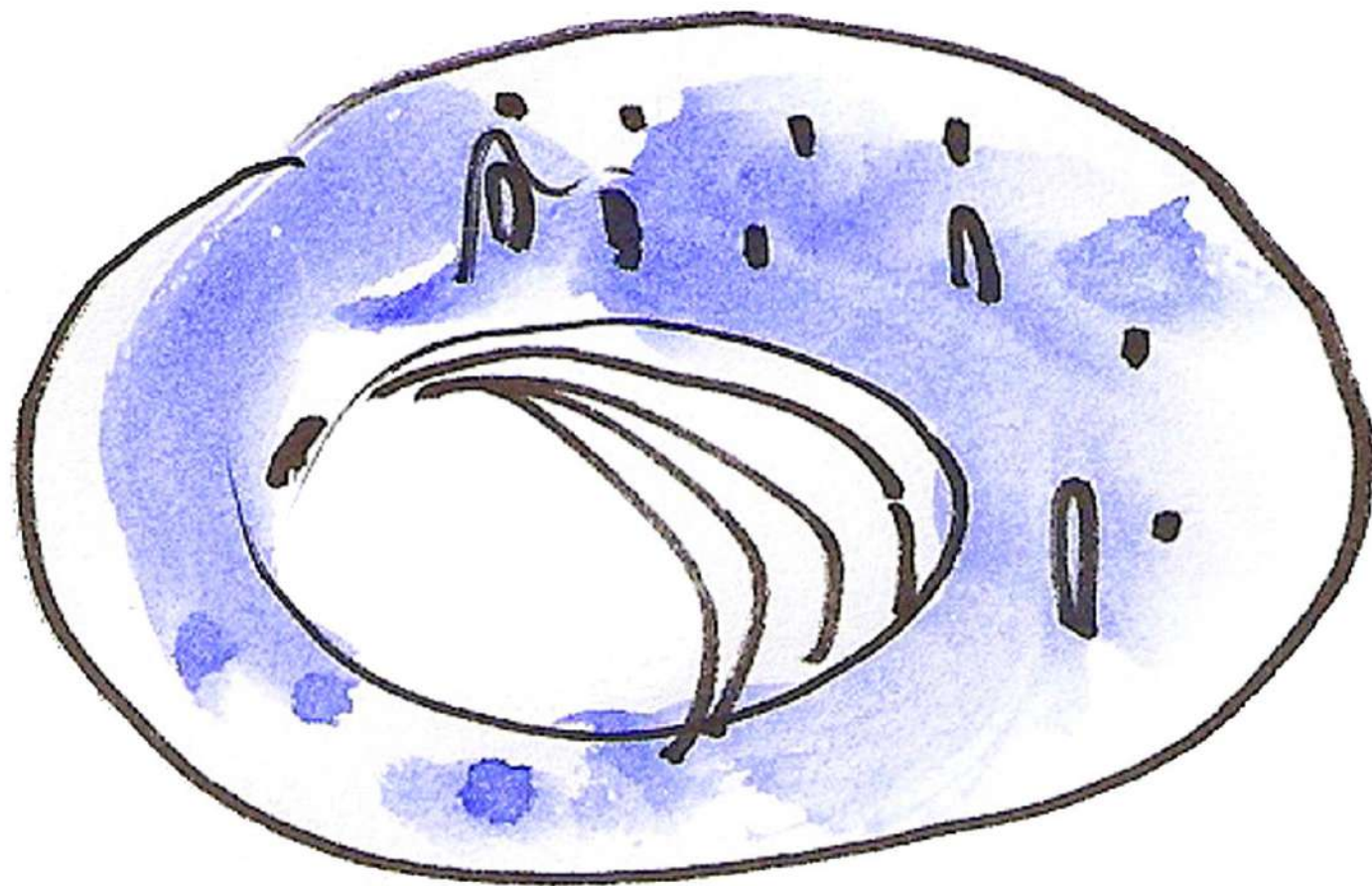
 Touristic Base / 2011  
/Master's degree. 1st semester. GTU/

### Workshops:

 New centre of Tbilisi /1 semester study course-workshop/ 2010  
/Studio prof. Jan Bocan, CTU in Prague, GTU/ Workshop winner/  
 Reconstruction-revitalization of historic districts subject to tour-  
istic routs/ International architectural Workshop/ Tbilisi.Georgia /2010

### Additional works:

 Sketches



■ Thank You...

© All projects, drawings, renderings, sketches and photos included in portfolio are handcrafted or made by Tamar Tsanova